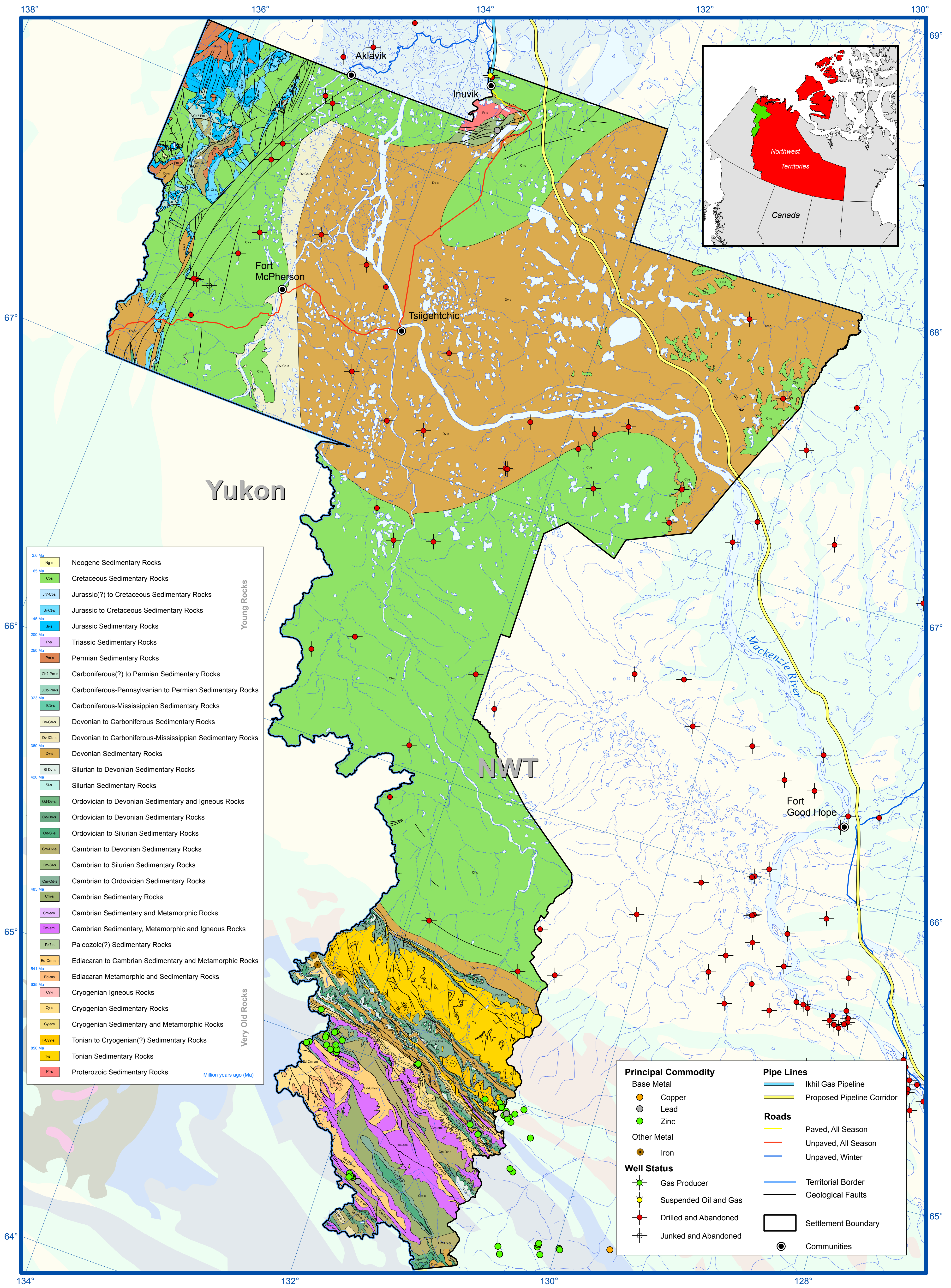




Mineral Showings, Petroleum Wells and Generalized Geology of the Gwich'in Settlement Area



Age (Ma)	Geological Unit	Category
2.6	Np-s	Neogene Sedimentary Rocks
65	Cr-s	Cretaceous Sedimentary Rocks
Jp-Cr-s	Jp-Cr-s	Jurassic(?) to Cretaceous Sedimentary Rocks
J-Cr-s	J-Cr-s	Jurassic to Cretaceous Sedimentary Rocks
145	J-s	Jurassic Sedimentary Rocks
200	Tr-s	Triassic Sedimentary Rocks
250	Pm-s	Permian Sedimentary Rocks
	Cp-Pm-s	Carboniferous(?) to Permian Sedimentary Rocks
	UCp-Pm-s	Carboniferous-Pennsylvanian to Permian Sedimentary Rocks
323	ICb-s	Carboniferous-Mississippian Sedimentary Rocks
	Dv-Cb-s	Devonian to Carboniferous Sedimentary Rocks
	Dv-ICb-s	Devonian to Carboniferous-Mississippian Sedimentary Rocks
360	Dv-s	Devonian Sedimentary Rocks
	Sl-Dv-s	Silurian to Devonian Sedimentary Rocks
420	Sl-s	Silurian Sedimentary Rocks
	Od-Dv-s	Ordovician to Devonian Sedimentary and Igneous Rocks
	Od-Dv-s	Ordovician to Devonian Sedimentary Rocks
	Od-Sl-s	Ordovician to Silurian Sedimentary Rocks
	Cm-Dv-s	Cambrian to Devonian Sedimentary Rocks
	Cm-Sl-s	Cambrian to Silurian Sedimentary Rocks
	Cm-Od-s	Cambrian to Ordovician Sedimentary Rocks
485	Cm-s	Cambrian Sedimentary Rocks
	Cm-sm	Cambrian Sedimentary and Metamorphic Rocks
	Cm-sm	Cambrian Sedimentary, Metamorphic and Igneous Rocks
	Pz-s	Paleozoic(?) Sedimentary Rocks
541	Ed-Cm-sm	Ediacaran to Cambrian Sedimentary and Metamorphic Rocks
	Ed-sm	Ediacaran Metamorphic and Sedimentary Rocks
635	Cy-s	Cryogenian Igneous Rocks
	Cy-s	Cryogenian Sedimentary Rocks
	Cy-sm	Cryogenian Sedimentary and Metamorphic Rocks
850	T-Cy-s	Tonian to Cryogenian(?) Sedimentary Rocks
	T-s	Tonian Sedimentary Rocks
	Pz-s	Proterozoic Sedimentary Rocks

Principal Commodity	Pipe Lines
Base Metal	Ikhil Gas Pipeline
Copper	Proposed Pipeline Corridor
Lead	
Zinc	
Other Metal	
Iron	
Well Status	Roads
Gas Producer	Paved, All Season
Suspended Oil and Gas	Unpaved, All Season
Drilled and Abandoned	Unpaved, Winter
Junked and Abandoned	
	Territorial Border
	Geological Faults
	Settlement Boundary
	Communities

Data for this poster were derived or modified from the following sources:

GeoBase
2005. <http://www.geobase.ca>

National Energy Board
2015. 444 Seventh Avenue S.W.
Calgary, Alberta T2P 0X8
<http://www.neb.gc.ca>
(via geOLOGIC Systems -
GeoScout software)

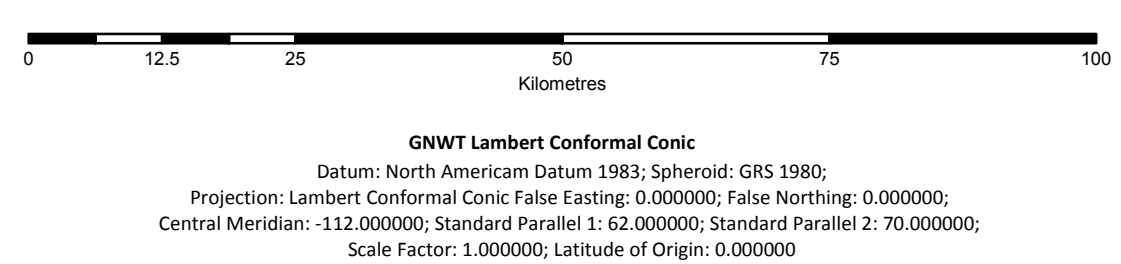
NORMIN.DB
2015, June
Database of Mineral Showings
for the Northwest Territories;

Northwest Territories Geological
Survey
P.O. Box 1330, 4601-8 52nd Ave
Yellowknife, NT, X1A 219
<http://www.nwtgeoscience.ca/>

Okulitch, A. V. and Irwin, D.,
2014. Geological Compilation of the
Western Mainland and Southern
Arctic Islands Regions, Northwest
Territories, Northwest Territories
Geological Survey, NWT Open File
2014-01, ESR® digital files.

Geological Survey, 2015 Yellowknife
Geoscience Forum Abstract Volume

Background Geology Map:
Wheeler, J.O., Hoffman, P.F., Card, K.D.,
Davidson, A., Sanford, B.V., Okulitch, A.V.,
and Rose, W.R. (comp.),
1997. Geological Map of Canada,
Geological Survey of Canada,
Map D1860A.



**NORTHWEST TERRITORIES
GEOLOGICAL SURVEY**

The Northwest Territories Geological Survey accepts no responsibility for any errors, inaccuracies and/or omissions in this data. Users wishing to rely upon this information should consult directly with the original source of the information.

Recommended Citation:
Irwin, D., 2016. Mineral Showings, Petroleum Wells and Generalized Geology of the Gwich'in Settlement Area; Northwest Territories Geological Survey, NWT Open Report 2016-001. 1 poster in Adobe® PDF format

Government of
Northwest Territories